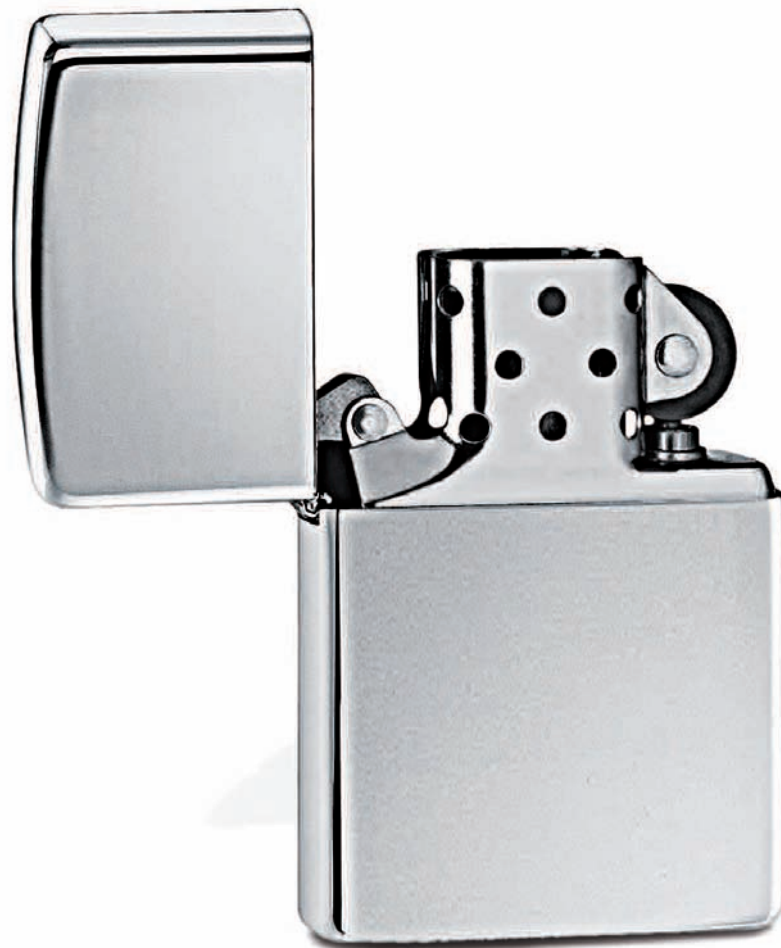


racking



Zippo lighter

George G. Blaisdell founded Zippo Manufacturing Company in 1932, and produced the first Zippo lighter in early 1933, they became popular in the United States military, especially during World War II.



340 racking



company profile



head space



van damme



cable



manufacturing



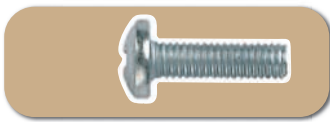
connectors



patching



networking



mains



cable accessories



miscellaneous



appendix



index

Prism 19" data cabinets and accessories	341-342
Prism 19" wall mount racks	342
ER flat packed rack frames and accessories	343-344
Cable trays	344
Rack strips	345
19" vertical fan panels	345
VDC 19" rack shelves & rack mount adaptors	346
Rack drawers	346
Rack lights	346
Extruded cases	347
Tie-bar panels and tie-bars	347
19" flat and extruded blank panels	347-348
19" vented panels	348
VDC Soho racks and accessories	349
Nuts, bolts and washers	350



prism racks & accessories

341

Prism PI 19" data cabinets 1

- Bolted Steel frame chassis 19" rack cabinets, delivered assembled on transport castors
- Flat pack option available for a surcharge – contact the Sale Dept.
- 600mm wide and either 600mm or 800mm deep
- Quick release slam latch smoked glass front door, vented lockable rear door and side panels
- Adjustable front, middle and rear 19" rack strips
- Raised vented top with cable access point, open base design for ease of cabling
- Comes with earth bonding kit
- Standard paint finish is Goose Grey (BS 00 A 05); black finish available to special order (lead time and surcharge may apply)
- Wide range of accessories available
- Multiple special options available – plain or vented steel doors, no side panels etc. contact the Sales Dept.

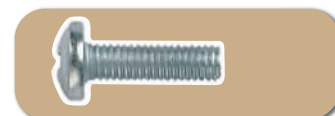
Order code	Description
737-030-001	12U 600 x 600 standard rack
737-032-001	12U 600 x 800 deep rack
737-038-001	18U 600 x 600 standard rack
737-040-001	18U 600 x 800 deep rack
737-042-001	27U 600 x 600 standard rack
737-044-001	27U 600 x 800 deep rack
737-050-001	42U 600 x 600 standard rack
737-052-001	42U 600 x 800 deep rack
737-054-001	45U 600 x 600 standard rack
737-056-001	45U 600 x 800 deep rack
737-055-001	47U 600 x 600 standard rack
737-057-001	47U 600 x 800 deep rack



Prism PI cabinet fan trays 2

- Roof and rack mount fan tray options

Order code	Description
737-100-002	Roof mount fan tray – 2 fans
737-100-003	Roof mount fan tray – 3 fans
737-102-002	Roof mount fan tray – 4 fans
737-166-002	1U rack mount fan tray – 2 fans
737-166-000	1U rack mount fan tray – 3 fans
737-166-004	1U rack mount fan tray – 4 fans



Prism PI accessories

Prism PI rack castors, feet, baying kit and plinths 1

- 100mm high fixed plinths with side and rear gland plates
- Levelling feet for rack installations on uneven surfaces
- Heavy duty castors – 2 normal, 2 locking
- Rack baying kit for securely joining adjacent racks

Order code	Description
737-120-002	100mm high 600 x 600 plinth
737-122-002	100mm high 600 x 800 plinth
737-118-002	Set of 4 levelling feet
737-116-002	Set of 4 heavy duty castors
737-124-002	Rack baying kit



342 racking



company profile



head space



van damme



cable



manufacturing



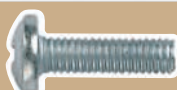
connectors



patching



networking



mains



cable accessories



miscellaneous



appendix



index

2 Prism PI 19" equipment rack shelves



- Fixed (25Kg maximum load) and heavy duty fixed (100Kg maximum load) vented shelves in 3 depths – fix between front and rear profiles
- Telescopic vented shelves (15Kg maximum load) to maintain free space behind shelf mounted equipment - fix between front and rear profiles
- All shelves stocked in 3 different depths
- 2U Keyboard shelf has rotating keyboard element to allow standard keyboards to be used with a pull out tray for mouse

Order code	Description
737-126-002	Fixed vented shelf 450mm deep
737-128-002	Fixed vented shelf 570mm deep
737-129-002	Fixed vented shelf 720mm deep
737-126-100	Heavy duty fixed vented shelf 450mm deep
737-128-100	Heavy duty fixed vented shelf 570mm deep
737-129-100	Heavy duty fixed vented shelf 720mm deep
737-130-002	Telescopic vented shelf 450mm deep
737-132-002	Telescopic vented shelf 570mm deep
737-133-002	Telescopic vented shelf 720mm deep
737-137-000	2U Sliding keyboard/mouse shelf

Prism wall mount racks

1 Prism 19" wall mounted and combi racks



Wall mount racks

- 450mm deep welded solid wall mount cabinets
- Lockable Perspex front door
- Adjustable 19" mounting profiles
- Gland plate cable entry points top, bottom and rear
- Earth bonding kit supplied

Order code	Description
737-134-001	6U 600 x 450 deep wall mount rack
737-136-001	9U 600 x 450 deep wall mount rack
737-138-001	12U 600 x 450 deep wall mount rack

Combi wall mount racks

- 600mm deep welded wall mount cabinets
- Lift off rear rack section allows a one man installation operation – rear plate can be mounted first separate from the main enclosure
- Lockable quick release glass door
- Lockable and removable quick release side panels
- 4 x adjustable 19" mounting profiles
- Gland plate cable entry points top, bottom and rear
- Earth bonding kit supplied

Order code	Description
737-234-001	6U 600 x 600 deep combi wall mount rack
737-236-001	9U 600 x 600 deep combi wall mount rack
737-238-001	12U 600 x 600 deep combi wall mount rack
737-240-001	15U 600 x 600 deep combi wall mount rack
737-242-001	18U 600 x 600 deep combi wall mount rack

ER racks & accessories 343

ER general purpose flat packed rack frames 1

- 613mm wide and either 613mm (std) and 735mm (deep) with fixed 19" profiles
- Manufactured from painted mild steel - frames are finished in dark grey and panels in light grey
- Units supplied with all the required fixings for easy user-assembly without special tools
- Quick release side panels supplied separately to the frames and are flush fitting.
- No doors are available for ER racks but a 613mm wide side panel can be used as a rear panel

Order code	Description
737-000-000	ER 11U Rackframe standard
737-020-000	ER 11U panel standard
737-002-000	ER 11U Rackframe deep
737-022-000	ER 11U Side panel deep
737-004-000	ER 22U Rackframe standard
737-024-000	ER 22U Side panel standard
737-006-000	ER 22U Rackframe deep
737-026-000	ER 22U Side panel deep
737-008-000	ER 30U Rackframe standard
737-028-000	ER 30U Side panel standard
737-010-000	ER 30U Rackframe deep
737-030-000	ER 30U side panel deep
737-012-000	ER 38U Rackframe standard
737-032-000	ER 38U Side panel standard
737-014-000	ER 38U Rackframe deep
737-034-000	ER 38U side panel deep
737-016-000	ER 42U Rackframe standard
737-036-000	ER 42U Side panel standard
737-018-000	ER 42U Rackframe deep
737-038-000	ER 42U Side panel deep



company profile



head space



van damme



cable



manufacturing



connectors



patching



networking

ER general purpose mounting brackets and shelves 2

- Chassis support brackets – these fit between the front and rear rack strips to support equipment with chassis widths of between 380 & 450mm.
Available in two depths: standard 613mm and deep 735mm
- Vented fixed shelf & support brackets – a vented shelf supported by chassis support brackets (included with shelf) NB vented shelf is only available in the standard depth but is supplied with either standard or deep chassis support brackets
- Cable support brackets – Slotted brackets which fix to ER side rack strips for fixing cable tray or cable trunking or for direct mounting of cabling using cable ties. **Available in two depths: standard 613mm and deep 735mm**
- Universal sliding shelf – a telescopic shelf with ballrace sliders with 2, 3 and 4U detachable rack ears. Fits rack depths from 550 to 844mm; maximum load 20 Kg

Order code	Description
737-040-000	ER support bracket for std. racks (pr)
737-042-000	ER support bracket deep racks (pr)
737-044-000	ER side support bracket & vented shelf std. racks
737-046-000	ER side support bracket & vented shelf for deep racks
737-052-002	ER Standard cable support brackets
737-054-002	ER deep cable support brackets
737-055-002	Telescopic shelf c/w 2U rack ears
737-056-003	Telescopic shelf c/w 3U rack ears
737-057-004	Telescopic shelf c/w 4U rack ears



index



mains



cable accessories



miscellaneous



appendix



index

344 racking



company profile



head space



van damme



cable



manufacturing



connectors



patching



networking



3 ER castors and plinths



- Sets of 4 standard (2") or heavy-duty (3") castors
- Base extender plinths available to stabilise heavily loaded racks

Order code	Description
737-054-000	ER set of 2" castors
737-056-000	ER set of 3" castors
737-048-000	ER Base stabiliser ext. for standard racks

4 ER baying kits



- Baying kits allow 2 racks without side panels to be linked together

Order code	Description
737-058-000	ER rackframe joining kit

1 Cable tray



- Zinc plated steel
- Available in 5 heights and 2 widths

Order code	Description
737-146-001	18U 150mm cable tray
737-148-001	18U 300mm cable tray
737-152-001	27U 150mm cable tray
737-154-001	27U 300mm cable tray
737-158-001	39U 150mm cable tray
737-160-001	39U 300mm cable tray
737-164-001	42U 150mm cable tray
737-166-001	42U 300mm cable tray
737-170-001	45U 150mm cable tray
737-172-001	45U 300mm cable tray

STOCKED UNTIL SOLD

On selected items



mains



cable accessories



miscellaneous



appendix



index

panel & rack accessories 345

Rack strip 2

- Powder coated black steel
- Only available in 2m lengths

Order code	Description
700-780-000	2m Rack Strip single black
700-782-000	2m Rack Strip double black



company profile



head space



van damme



cable



manufacturing



connectors



patching



networking



19" vertical fan panels 3

- 3U 230V AC. Black powder coat finish.
- Captive 3-core rubber HO5 mains lead NB not supplied with a mains plug!
- Finger-guards and an on/off switch.

Order code	Description
737-900-000	19" 3U fan panel (air intake)
737-901-000	19" 3U fan panel (air expelling)



mains



cable accessories



miscellaneous



appendix



index

Cable management panels 4

- 1 or 2U with brush strips allowing cable access
- 1 or 2U with large jumper rings for patch cord organisation
- All panels black powder coat finish

Order code	Description
737-174-001	1U Black panel with brush strip
737-176-002	2U Black panel with brush strip
737-178-001	1U Black panel with 4 jumper rings
737-180-002	2U Black panel with 4 jumper rings



index

346 racking



company profile



head space



van damme



cable



manufacturing



connectors



patching



networking



mains



cable accessories



miscellaneous



appendix



index

5 VDC 19" rack shelves



- 1.5mm folded steel
- Powder coated black.
- Internal width of all units is 446mm
- Load capacity of 1u, 2u & 3u is 15Kg, 22Kg & 38Kg respectively
- Depth of 1u is 272mm; 2u & 3u is 364mm

Order code	Description
700-016-001	1U fixed rackshelf
700-718-002	2U fixed rackshelf
700-020-003	3U fixed rackshelf

6 Rack mount adapters



- 1.2mm folded steel
- Powder coated black.
- Load capacity of 1U, 2U & 3U is 25Kg, 30Kg & 35Kg respectively
- Units allow non-standard or domestic equipment to be fitted into a 19" rack

Order code	Description
737-184-002	2U rack mounting Kit
737-186-003	3U rack mounting Kit
737-190-004	4U rack mounting Kit

7 Rack drawers



- 1.2mm folded steel
- Powder coated black.
- Load capacity of 2U, 3U, 4U & 6U is 22Kg, 26Kg, 35Kg & 38Kg respectively
- All units are 367mm deep

Order code	Description
763-070-002	2U rack drawer
763-072-003	3U rack drawer
763-074-004	4U rack drawer
763-076-006	6U rack drawer

8 Rack lights



- VDC 1U switched fixed 230v racklight
- EMO 1U switched and 2 position dimmer sliding racklight. 100mm deep
- 12" Gooseneck LED lamps with either BNC or XLR 3 pin male connector; 4 x LED gives 9.6W illumination
- 1U Coolight racklight LED tube light with adjustable beam angle; external 5V PSU. Available as blue or satin white light beam

Order code	Description
742-501-000	EMO 19" racklight
763-900-000	19" fixed racklight
763-901-000	12" LED Gooseneck lamp XLR male fitting
763-902-000	12" LED Gooseneck lamp BNC fitting
763-904-000	1U Coolight LED racklight satin white
763-905-000	1U Coolight LED racklight blue

panel & rack accessories 347

Extruded cases 9

- Extruded front and rear screw onto top and bottom leaving flat no-screw look
- Front panel dawn grey or black to special order, rest is bare aluminium
- Available in 3 heights and 2 depths

Order code	Description
761-034-000	1U x 150 mm 19" extruded case
761-036-000	1U x 300 mm 19" extruded case
761-038-000	2U x 150 mm 19" extruded case
761-040-000	2U x 300 mm 19" extruded case
761-042-000	3U x 150 mm 19" extruded case
761-044-000	3U x 300 mm 19" extruded case



company profile



head space



van damme



cable

Tie-bar panels and Tie-bar 10

- 2U extruded black powder coated panel with 100mm tie bar
- 50mm and 100mm tie bars available including M4 countersunk screws
- 2U panel with 2 x VDM 85/150 pole cut outs screen printed FOH and MON

Order code	Description
561-300-000	2U panel with tie bar
737-192-001	50mm steel tie bar and screws
560-015-000	100mm steel tie bar and screws
561-300-002	2U panel with 2 x VDM 85/150 cut outs & 100mm tie bar



manufacturing



connectors



patching

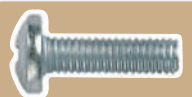
Flat aluminium panels 11

- 1U to 4U flat black aluminium blank panels
- Grey and anodized aluminium finish to special order

Order code	Description
700-751-000	1U aluminium blanking panel black
700-752-000	2U aluminium blanking panel black
700-753-000	3U aluminium blanking panel black
700-754-000	4U aluminium blanking panel black



networking



mains



Extruded aluminium panels 12

- 1U, 2U and 3U extruded aluminium blank panels
- Available in black or dawn grey

Order code	Description
761-010-000	1U extruded panel black
761-012-000	1U extruded panel dawn grey
761-016-000	2U extruded panel black
761-018-000	2U extruded panel dawn grey
761-022-000	3U extruded panel black
761-024-000	3U extruded panel dawn grey



cable accessories



miscellaneous



appendix



index

348 racking



company profile



head space



van damme



cable



manufacturing



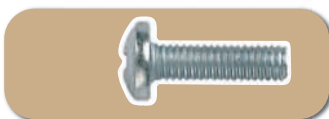
connectors



patching



networking



mains



cable accessories



miscellaneous



appendix



index

13 Flat steel panels



- 1U, 2U, 3U and 4U 1.5mm steel blanks
- Available in Black finish

Order code	Description
700-770-000	1U steel blank panel
700-772-000	2U steel blank panel
700-774-000	3U steel blank panel
700-776-000	4U steel blank panel

14 Mesh vent panels



- 2 styles of mesh vent panel available in black only
- High quality extruded 3mm aluminium or punched 1.2mm mild steel
- Replace stock code grid with the following

Order code	Description
761-028-001	3mm extruded aluminium 1U mesh vent panel black
761-030-001	3mm extruded aluminium 2U mesh vent panel black
761-032-001	3mm extruded aluminium 3U mesh vent panel black
761-028-002	1.2mm mild steel 1U mesh vent panel black
761-030-002	1.2mm mild steel 2U mesh vent panel black
761-032-002	1.2mm mild steel 3U mesh vent panel black

15 Louvred vent panel



- 1U, 2U, and 3U 1.5mm steel louvred vent panels
- Available in black finish

Order code	Description
700-761-000	1U louvred panel
700-762-000	2U louvred panel
700-014-000	3U louvred panel

VDC soho 349

Soho wall boxes 1

- 8U and 12U 10 inch racking SOHO (Small Office & Home) cabinets
- Black finish, lockable Perspex front door, adjustable front profiles
- Removable vented side panels
- Top and bottom gland plates with knockouts
- Only suitable with the following 10" rack mount products

Order code	Description
580-600-008	8U SOHO 10" wall mount cabinet
580-602-012	12U SOHO 10" wall mount cabinet



company profile



head space



van damme



cable

Soho 10" copper cabling panels 2

- 8 and 12 port 1U Cat 5E UTP panels
- nPassive 1U 4 x Cat 5E UTP 4 x BT telephone port
- 8 port 1U unloaded keystone panel for keystone Cat X jacks – see the networking section
- 12 port 1U panel loaded with F connector female to female bulkheads

Order code	Description
580-604-000	1U 10" 8 port Cat 5E UTP panel
580-606-000	1U 10" 8 port Cat 5E UTP panel
580-608-000	1U 10" 4 x Cat 5E UTP 4 x Voice panel
580-610-000	1U 10" 8 way unloaded keystone panel
580-612-000	1U 10" 12 way F connector panel loaded



manufacturing



connectors



patching

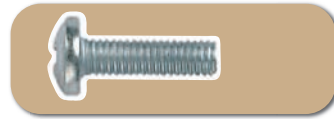


networking

Soho 10" fibre panels & accessories 3

- 2 styles of fibre panel – sliding tray with cable management; plain 10" panel no lid or cable management. Both with 6 x duplex SC/quad LC coupler cutouts
- Multimode Duplex SC, Quad LC and blanks to suit
- Single mode connectors available to special order – contact the Sales Dept.

Order code	Description
580-614-000	1U 10" 6 port fibre sliding tray
580-616-000	1U 10" 6 port fibre panel
580-618-000	Multimode duplex SC coupler
580-620-000	Multimode quad LC coupler
580-622-000	Coupler cutout blank



mains

mains

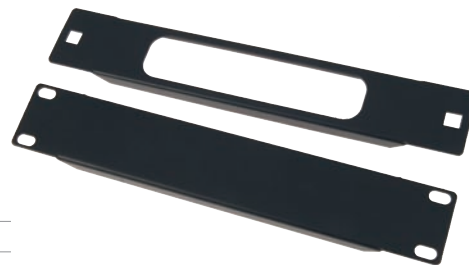


cable accessories

Soho 10" fibre panels & accessories 4

- Blank panels with or without patchcord cutout
- Cable management panel
- 1U 10" rack shelf – maximum loading weight 5Kg
- Power distribution unit – 3 x 13A sockets, 2m captive mains cable & rocker switch. Maximum load 5 Amps

Order code	Description
580-624-000	1U 10" blank panel
580-626-000	1U 10" blank panel with patchcord access slot
580-628-000	1U 10" blank panel with patchcord slot
580-630-000	1U 10" rack shelf
580-632-000	1U 10" 3 way PDU



miscellaneous



appendix



index

350 racking



company profile



head space



van damme



cable



manufacturing



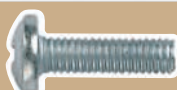
connectors



patching



networking



mains



cable accessories



miscellaneous



appendix



index

1 Nuts, bolts and washers



- M6 rack fixings available in bags of 50 only
- M2.5, M3 and M4 fixings in bags of 100 only

Order code	Description
700-024-050	M6 Screw silver 12mm x 50
700-026-050	M6 Screw black 12mm x 50
700-028-050	M6 Screw silver 20mm x 50
700-766-050	M6 Screw black 20mm x 50
700-030-050	M6 Screw silver 40mm x 50
700-770-050	M6 Plastic flat washer black x 50
700-769-050	M6 Plastic cup washer black x 50
700-022-050	M6 Cage nut (3mm) x 50
700-768-050	M6 Cage nut (1.5mm) x 50
700-775-050	Universal Cage nut fitting tool black
700-125-012	M2.5 Cheesehead silver screw 12mm x 100
700-125-020	M2.5 Cheesehead silver screw 20mm x 100
700-025-012	M2.5 Countersunk silver screw 12mm x 100
700-030-012	M3 Countersunk silver screw 12mm x 100
700-030-112	M3 Countersunk black screw 12mm x 100
700-130-012	M3 Panhead silver screw 12mm x 100
700-130-112	M3 Panhead black screw 12mm x 100
700-130-020	M3 Panhead silver screw 20mm x 100
700-130-120	M3 Panhead black screw 20mm x 100
700-135-120	M3.5 Domehead countersunk silver screw 20mm x 100
700-140-012	M4 Panhead silver screw 12mm x 100
700-140-112	M4 Panhead black screw 12mm x 100
700-140-020	M4 Panhead silver screw 20mm x 100
700-140-120	M4 Panhead black screw 20mm x 100
700-525-000	M2.5 Nylon locking nut x 100
700-530-000	M3 Nylon locking nut x 100
700-540-000	M4 Nylon locking nut x 100