



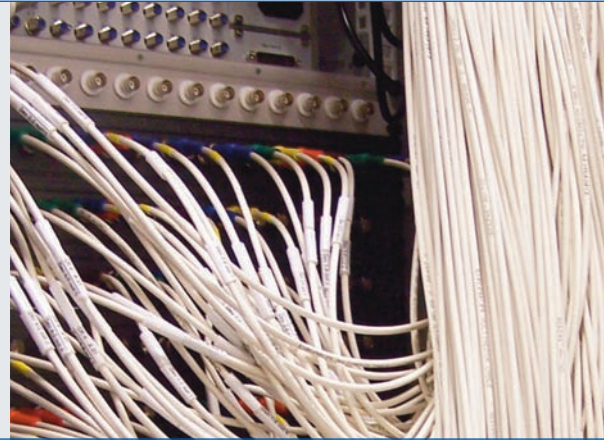
Draka

Draka Comteq | Cable Solutions - EMEA



Draka

Draka Comteq | Cable Solutions - EMEA



Screening classes A and B

To reduce egress and ingress to a tolerable level, our CATV cables are equipped with screening constructions which fulfil the latest standards EN 50117-2-n: Drop cables follow class A, B or C, Trunk cables reach class A+ or A++ performance. Due to applications with backward channel operation and higher EMI demands, the trend clearly leads to cables with utmost shielding - we can supply cables with over 120dB screening.

Anti-aging and low reflections

The dielectrics consist of physically foamed cellular PE, thus no chemical additives are needed and no aging effects appear.

Halogen-free and flame-retardant

For each application the correct sheath material. You can choose between PVC and FRNC (flame retardant, non corrosive) for indoor or PE for outdoor use. Also special water resistant FRNC materials are available.

Connector compatibility

Draka Comteq CATV Cables cover the whole range of CATV cabling, compatible to your favourite connectors - we have this approved by leading connector manufacturers. You can download compatibility certificates and all relevant data sheets under www.drakact.com/hfc0e.html. Do not hesitate to contact us for further information.

Drammen, Norway

Brøndby, Denmark

Washington, Great Britain

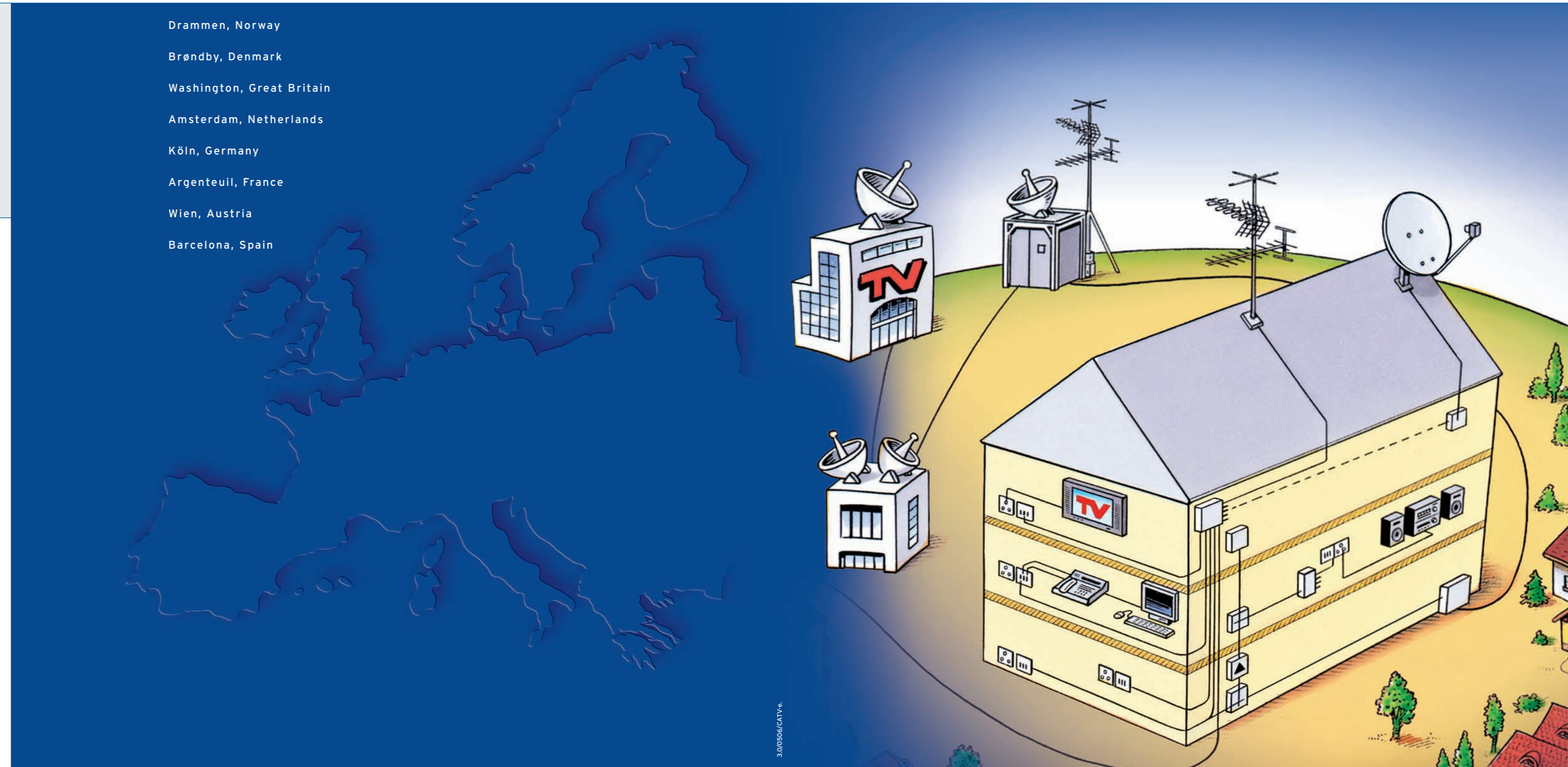
Amsterdam, Netherlands

Köln, Germany

Argenteuil, France

Wien, Austria

Barcelona, Spain

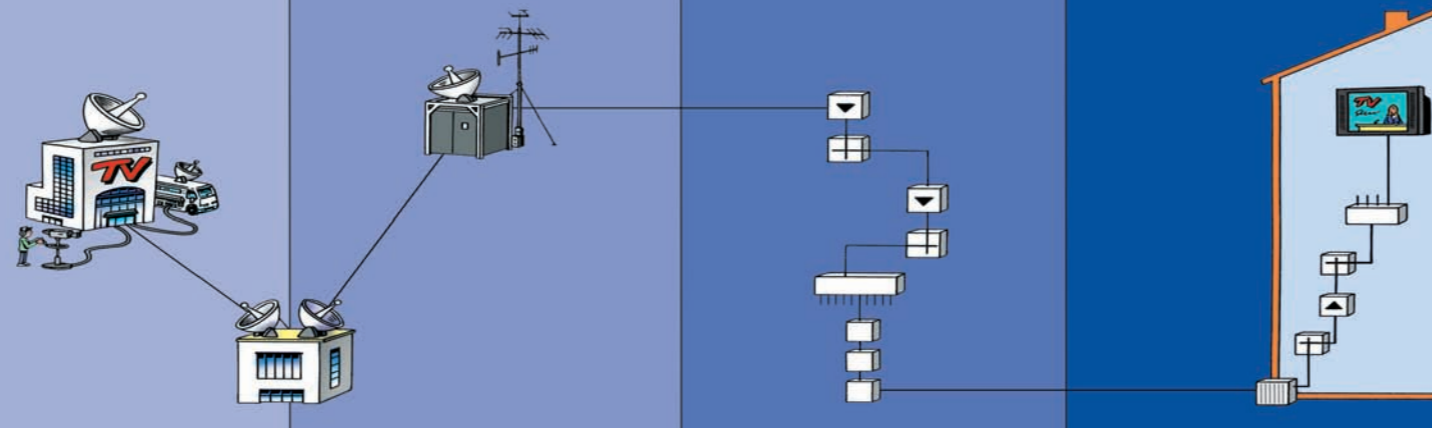


3.0/0506/CATV-e



Drop and Trunk Cables for trunk, distribution and drop area

Draka Comteq - a member of Draka Holding N.V. located in Amsterdam - offers a versatile and reliable range of copper and optical fibre cables for the transmission in the data and telecommunication industry. Our long-lasting expertise in cable and fibre business has been the basis for us holding a major market position today. Draka Comteq is located in more than 30 countries in Europe, Asia, North America and South America.



Draka Comteq produces high-quality copper and optical fibre cables for all multimedia applications.



DROP CABLES MAINLY INDOOR CABLES, PVC OR FRNC

Type	Attenuation @ 862MHz	Conductor/Dielectric	Ø Outer Diameter
Coax15 AD 06	30 dB/100 m	0.66/2.95 mm	4.3 mm
Coax11 AD 08	24 dB/100 m	0.8/3.5 mm	5.0 mm
Coax10 AD 10	19 dB/100 m	0.95/4.65 mm	6.8 mm
Coax 9 AD 11	17 dB/100 m	1.13/4.8 mm	6.8 mm
Coax 6 AD 16	13 dB/100 m	1.61/7.15 mm	10.1 mm

*Class A, B and C according to EN 50117-2-1,-2,-4 and -5 (incl. Cenelec SC46XA)

S „Super“

2 bonded Al-PET-Foils
+ 70-80% Braid
Screening Attenuation > 110dB
Class A* + Reserve

A „Advanced“

Al-PET-Al-Foil
+ 70-80% Braid
Screening Attenuation > 90dB
Class A*

E „Economy“

Al-PET-Al-Foil
+ 40% Braid
Screening Attenuation > 80dB
Class B/C**

Cabelcon: F-60 Mini 3,2/5,6 PPC: CMP-MC32 PINK · CMP-MC30 Yellow
Cabelcon: Series -11 · Series -106 · F-59 (3,7) PPC: CMP-MC37 Orange
Cabelcon: Series -01 (4,9) · F-56 (4,9) PPC: Series A025 (4,9) · CMP-6-49 Blue · EX-6 - 49/83
Cabelcon: Series -01 (5,1) · F-56 (5,1) PPC: Series A025 (5,1) · CMP-6-51 Grey · EX6-51/83
Cabelcon: Series -C232 · Series -32 · FM-RG11 PPC: Series B004 · EX11

TRUNK CABLES MAINLY OUTDOOR CABLES WITH PE JACKET

Type	Attenuation @ 862MHz	Conductor/Dielectric	Ø Outer Diameter
Coax6 CT 15	11 dB/100 m	1.55/7.25 mm	10.1 mm
Coax6 CT 17		1.7/7.05 mm	10.5 mm
Coax4 CT 22	9 dB/100 m	2.2/8.8 mm	12.3 mm
		2.2/9.3 mm	12.5 mm
Coax3 CT 33	6 dB/100 m	2.2/10.2 mm	13.8 mm
		3.3/13.5 mm	17.1 mm
		3.42/15.1 mm	19.3 mm

*Class A+ and A++ according to EN 50117-2-3 (incl. Cenelec SC46XA)

S „Super“

welded Cu Tube
Screening Attenuation > 120dB
Class A++*

A „Advanced“

Cu-PET-Cu-Foil
+ 60% Geflecht
Screening Attenuation > 100dB
Class A+*

E „Economy“

Cu-Foil
+ 60% Braid
Screening Attenuation > 90dB
Class A/B

Cabelcon: Series -12
Cabelcon: Series -C303 · Series -03 PPC: Series D015
Cabelcon: Series -C232 · Series -32 · FM-RG11 PPC: Series B004 · EX11
Cabelcon: Series -C232 · Series -32 · FM-RG11 PPC: Series B004 · EX11
Cabelcon: Series -C303 · Series -03 PPC: Series D015
Cabelcon: Series -309
Cabelcon: Series -413 · Series -C314 PPC: Series E019
Cabelcon: Series -C525 · Series -25 PPC: Series G003
Cabelcon: Series -C646 · Series -46 PPC: Series H011