

# head space



## **Magnetic Compass**

The magnetic compass was invented during the Chinese Han Dynasty between the 2nd century BC and 1st century AD, and has been used for navigation since the 11th century.





company profile

## The technical department



van damme



cable



manufacturing



connectors



patching



networking



racking



mains



cable accessories



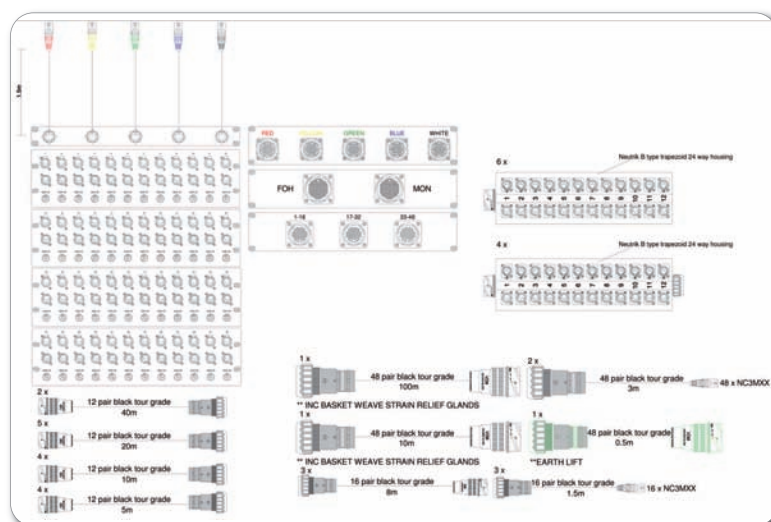
miscellaneous



appendix



index

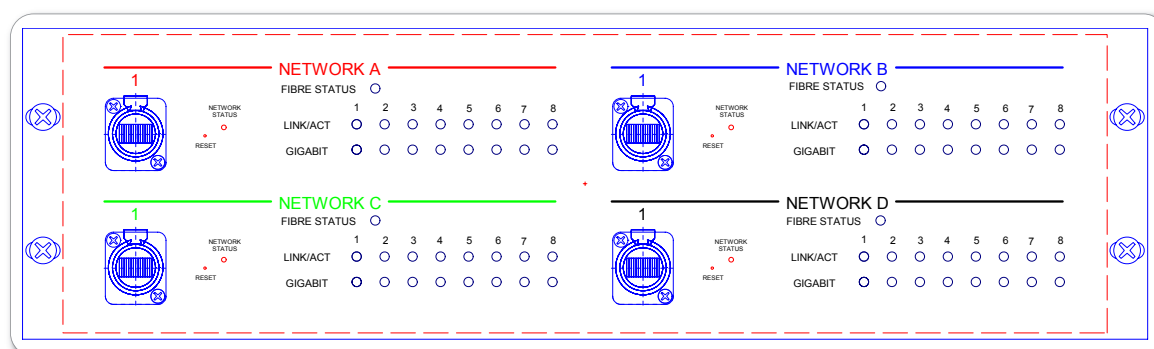


**Client: CT Asia Pacific**

*An all singing all dancing 48 channel multicore system. Featuring Sowter transformers on every input channel, comprehensive patching using multiple thru and sub stageboxes and a stagebox soft patch. From order to despatch in just over 2 weeks.*

CT Asia Pacific Head of Audio Dan Mosley, pictured, said

*"We have had the rack and all the cable out on a couple of shows now and it's performed as we expected - perfectly - no buzzes and no faults. It's an extremely well made system especially given the very short time period you had to make this. We have had no issues with it at all and are very pleased."*



**Client: Lite Alternative**

*Drawings for Lite Alternative's 48 channel custom fibre optic Ethernet control network. 4 independent 12 channel networks linked by Neutrik OpticalCon Quad multimode fibre cables.*





company profile



van damme



cable



manufacturing



connectors



patching



networking



racking



mains



cable accessories



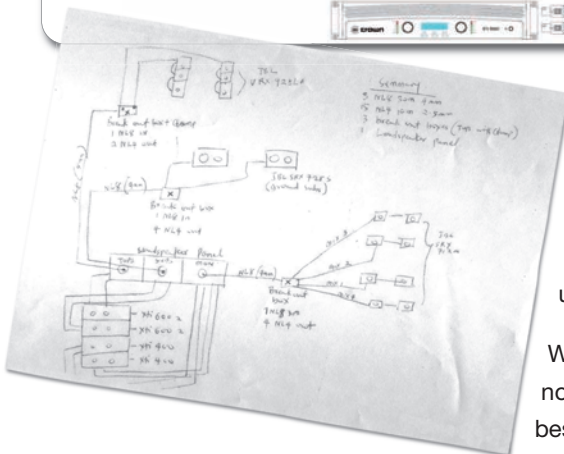
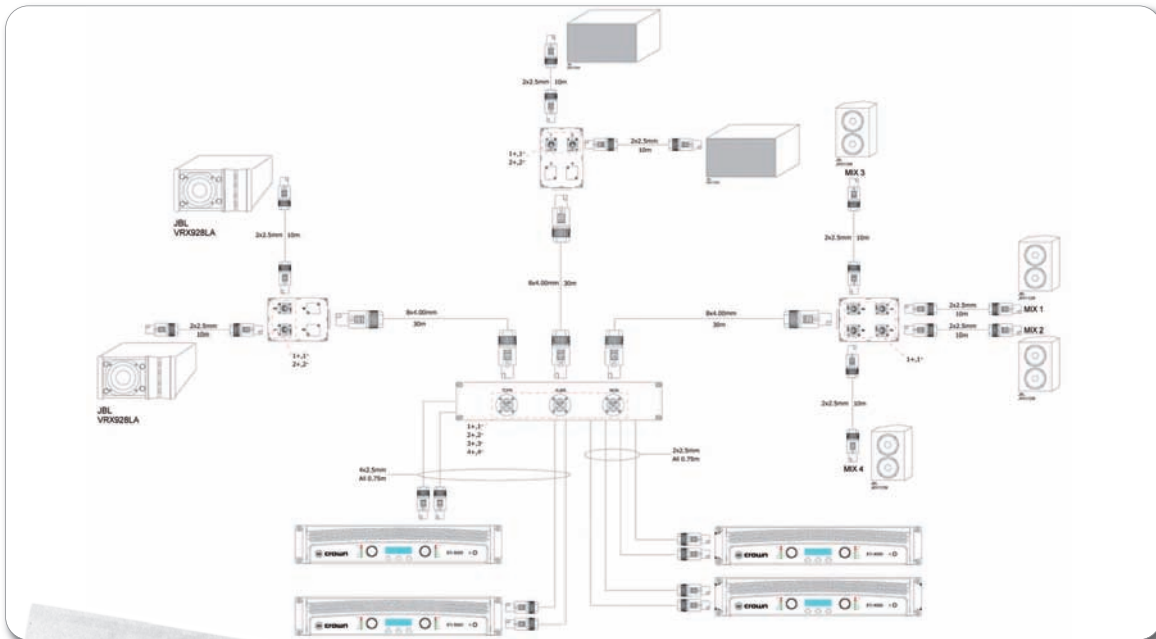
miscellaneous



appendix



index



A typical technical remit of 'fag packet' drawing to CAD design to manufacture.

VDC's Technical Department has 40 years of combined experience providing custom solutions, technical advice and support to our clients. Whether it's answering a question regarding a custom pin out or simply providing sound technical advice on existing products we will usually have the answer at hand.

We now estimate that over 35% of our business involves non stock items encompassing one-off cable assemblies, bespoke audio visual systems, custom metalwork, product sourcing and development, prototyping and design. It is more than likely we will have encountered your problem or system requirement before – or at least something similar. We have a technical library that goes back 20 years and it is this wealth of knowledge and experience that makes the VDC Technical Department such a valuable resource, both internally and externally.

We continually expand the department and make considerable investment in our systems to enable us to keep to the high standards of support and quick turnaround that our clients expect. Our staff has the right mix of academic qualifications and practical experience essential for the provision of achievable real world solutions to the problems created by today's technologies. Membership of The Society of Motion Picture and Television Engineers (SMPTE) and The Audio Engineering Society (AES) ensures that we can access current and historical technical data for the audio, video and broadcast industries. When we say that a cable or component meets the requirements for SMPTE 292M we have actually looked it up.

Email or call to pose any technical question big or small:

**technical@vdcetrading.com**

or call us on **+44 (0)20 7700 2777**

16

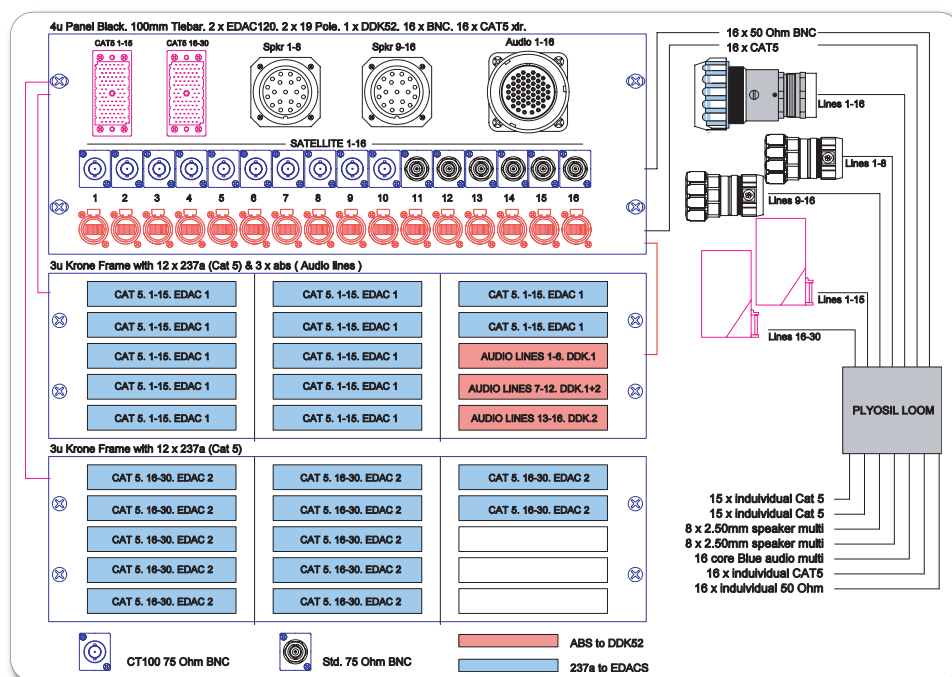


head space



company profile

## CAD design and custom panels



VDC supplies a considerable amount of custom panels – whether unloaded, loaded or wired. From a simple VDM multipin panel for a stagebox to a range of custom IP67 stainless steel triax, fibre and audio external facility panels VDC can supply the highest quality bespoke metalwork. We can work with AutoCAD or Stardraw client drawings, or a ‘fag packet’ sketch. System designs are also comprehensively drawn up to illustrate quotations, ensuring that the spec is crystal clear before manufacture.



VDC custom electronic tester rack.



van damme



cable



manufacturing



connectors



patching



networking



racking



mains



cable accessories



miscellaneous



appendix



index



## Testing & documentation

VDC's manufacturing department has an enviable reputation for quality and accuracy which we are very proud of. New staff undergo rigorous training before actually being let loose on live work, and manufactured items are subject to regular in depth QC checks in addition to standard tests.

VDC has invested many thousands of pounds in custom electronic test equipment; this is used to test more complex systems and multipin connectors. Exclusively designed and built for us the electronic brain of the tester is capable of testing a 48 channel 144 connection VDM multipin for continuity and shorts in under a minute. In addition its programmability allows even the most complex cable assembly pin outs to be stored and recalled at the touch of a button.

As our production of bespoke Category 5E/6 cables for the audio visual and broadcast markets has increased, we now test all cables over 10 metres with a Category cables verifier. Not only does this check for continuity and correct pair allocation, it also confirms the speed of the data link to show that the assembly is working as a true 100 Megabit or Gigabit data link. This device also checks the skew between pairs and gives attenuation readings.

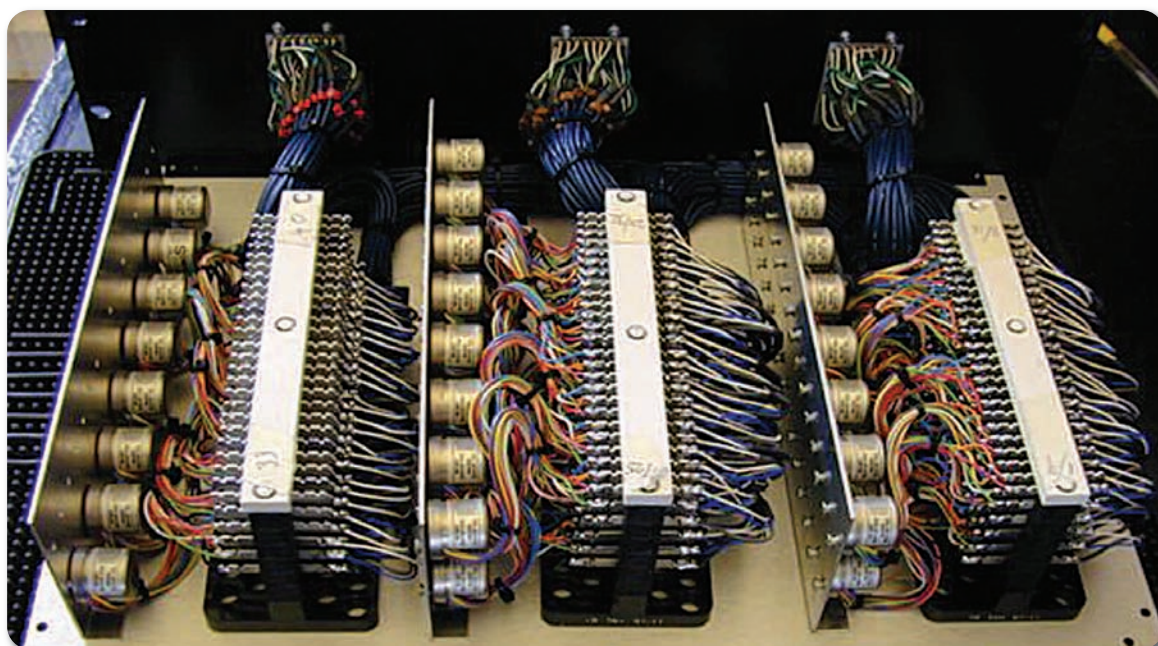


Looms, multicores and systems are all issued with a tested sticker to confirm that electronic testing has been carried out; this gives each job a unique identity. This is then logged on our technical database which records all aspects of the job including any CAD drawings, pin outs, colour codes and wiring specs. The more complex systems will

have an accompanying technical folder which will contain drawings, pin outs, cable colour codes and wiring specifications.

All electrical items are PAT tested by properly trained staff members; system test information is usually signed off by the supervising head wireman and department QC officer.

In live performance and broadcast there is only one chance to get it right; VDC takes all possible steps to ensure that it won't be our interconnects that cause problems.



company profile



van damme



cable



manufacturing



connectors



patching



networking



racking



mains



cable accessories



miscellaneous



appendix



index

18



head space



company profile



van damme



cable



manufacturing



connectors



patching



networking



racking



mains



cable accessories



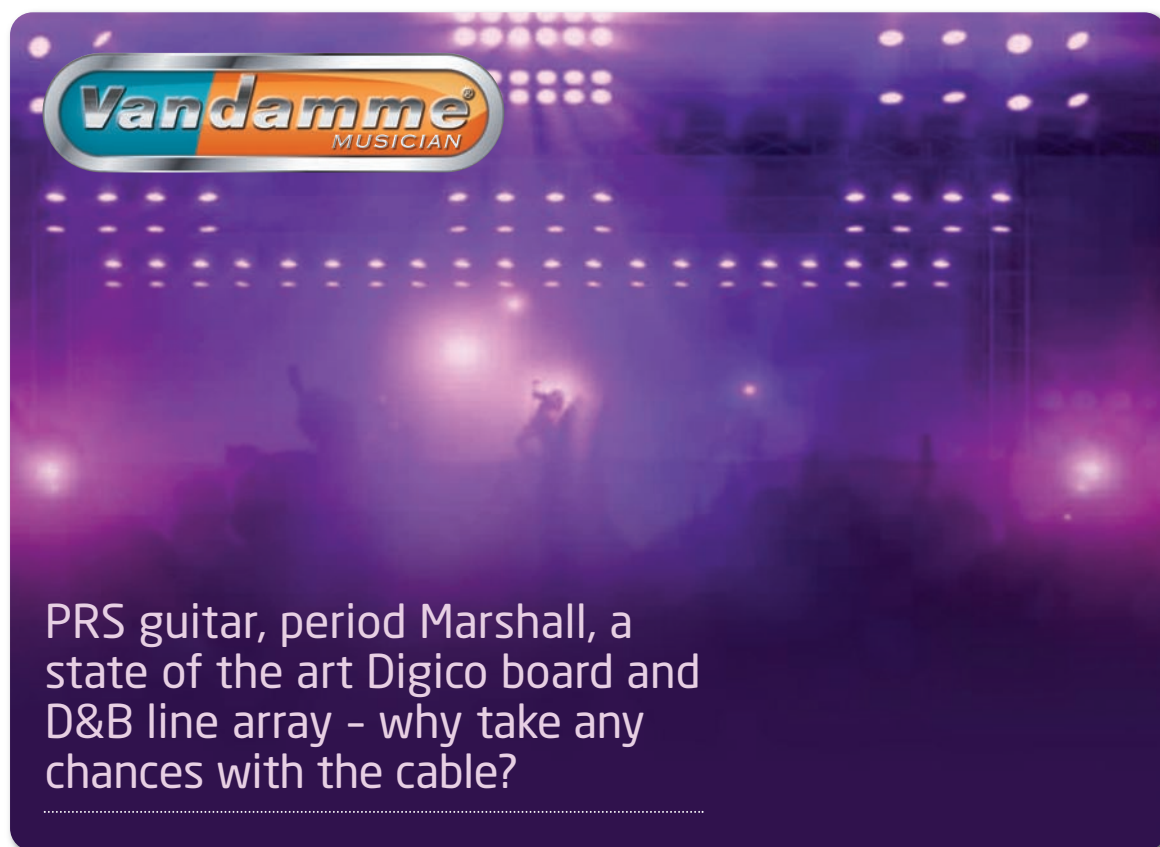
miscellaneous



appendix



index



Paul Reed Smith and PRS Guitars have a well-deserved reputation for building some of the world's finest electric guitars. Paul is renowned for his perfectionism and constant drive to keep improving their instruments and never resting on his laurels, a philosophy which is instilled in PRS from the top down.

PRS Guitars and VDC first joined forces in developing a PRS Signature Series Cable range in 2007 and after an extended R&D period production began in earnest in early 2009. The range comprises jack to jack guitar cable based on the Van Damme XKE instrument cable with Neutrik gold plated mono jacks and silent jack; and speaker cables using Van Damme Blue Series Studio Grade 2 x 2.5mm.

These exclusive cables are distributed through PRS's international distributor network to music stores world-wide or are available through the PRS web shop.

We'll leave the last word to Jack Higginbotham, PRS President:

"Like PRS, Van Damme is extremely focused on quality, reliability and continual improvement, and because both of our shops have an independent character, the partnership has been effortless every step of the way. We trust their cables to faithfully bring to life the tone that we work so hard to get from our guitars and amplifiers"





# Marshall

AMPLIFICATION

A British company that needs no introduction, Marshall Amplifiers have stood and still stand behind some of the greatest electric guitar players ever. Jimi Hendrix, Pete Townsend, Eric Clapton, Angus Young, Jeff Beck, Gary Moore – the list of enthusiastic Marshall users could fill this page.

Celebrating their 50th Anniversary this year, Marshall's factory is still UK based and although production techniques have evolved massively since their early days, they continue to manufacture hand wired models faithfully reproducing the unique Marshall sound.

VDC and Van Damme proudly supply Marshall with cables for two of their Signature Series Models; classic vintage amplifier designs integrated into the 21st Century and developed with guitar players who are leaders in their respective genres.

## Marshall YJM100 – Yngwie J Malmsteen

Based on the classic 1959 “Plexi” 100W head, the YJM100 marries vintage Marshall characteristics with modern technology. The front panel has 2 paralleled inputs – channel I (High Treble) and channel II (normal). A classic trick used with the original 1959 was to use a jack patchcord to connect the 2 channels together on the front panel; and it is this patchcord that VDC are manufacturing for Marshall. Pro Grade Classic XKE Instrument cable and monogrammed gold plated Neutrik connectors ensure that the high quality ethos behind this amplifier is fully complemented by a British manufactured hand wired guitar cable.

## Marshall AFD100 – Slash

Hand built by Marshall, this model is a dual mode amplifier, each mode based on a different modified Marshall head used by Slash. For this Signature Series model, VDC were asked to supply a unique speaker cable jack lead, to complement both the sound and the look of the amplifier. We came up with an exclusive braided screened cable, overjacketed in clear PVC with silver Neutrik mono jacks. An essential accessory for what has been described as one of the most anticipated Marshall products ever.

## Marshall Guitar and Speaker Cables

Building on the quality of manufacturing inherent in all VDC and Van Damme products, we are now supplying Marshall with a range of guitar and speaker cables. Like the finest Marshall Amplifiers these assemblies are hand wired with pride in England, and feature Van Damme Classic XKE Instrument Cable and Studio Grade Blue Series 2.5mm speaker cable with gold plated Marshall monogrammed Neutrik jacks. Due to be launched in 2012, these assemblies are the optimal pathways to and from the timeless classic that is a Marshall head.



company profile



van damme



cable



manufacturing



connectors



patching



networking



racking



mains



cable accessories



miscellaneous



appendix



index



20



head space



company profile



AMERICAN BUREAU OF SHIPPING



van damme



cable



manufacturing



connectors



patching



networking



racking



mains



cable accessories



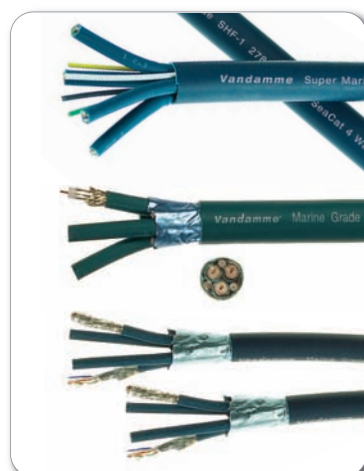
miscellaneous



appendix



index



The Van Damme Marine Grade SeaSat and SeaCat, and Super Marine Cat 6 cable ranges are now firmly established products in the luxury yacht audio visual market. Used for the backbone of an AV installation they provide Satellite and HD-SDI, high definition video server pathways, data and fibre links ensuring that the exceptionally high fitting standard expected by this class of vessel's owner is maintained in the cabling infrastructure they are never likely to see. Manufactured to EN standards where appropriate, these cables meet the most stringent standards required by the marine world. Halogen free, flame retardant and meeting the IEC standard 60092-359 for shipboard data and communication cables the Shipyard or Audio Visual installer can be confident that there will be no issues raised during final Class Inspections.

VDC and Van Damme have built on these firm foundations and we are continuing to develop our Marine offer with more specialist Van Damme cables currently in development as well as the expansion of general marine products in the VDC product offer. If we don't stock it then we can source it from our wide network of European factories and distributors – BS6883, IEC 60092, IEC60331 and IEC60332 cables and marine networking products to name but a few.

Our client base within the Marine Industry is broad – we supply the market leading Audio Visual installers in the UK, Europe and the USA, Shipyards, refitting specialists and even supplied the cabling for the installation of an infra-red movement detection Bridge Safety System for a large dredger.

**Many of the products we supply have Marine Type Approvals such as ABS (American Bureau of Shipping), Lloyds, Germanischer Lloyds and DNV.**

