

## SUMMARY

### # Wires

Low	0
High	0
Coax	0
Triax	0
Quad	0
Fiber	4
Fluidic	0



### Download

[Request a quote](#)

[Catalog](#)

Series	4K
Termination type	
IP rating	68
Cable Ø	0.00 - 0.00 mm
Matching parts	xxx

## TECHNICAL DETAILS

### Mechanics

Shell Style/Model	FX*: Fixed plug with round flange and screw fixing
Keying	1 key (alpha=0, plug: male contacts, receptacle: female contacts)
Housing Material	Brass (chrome plated) shell and collet nut, nickel plated brass latch sleeve and mid pieces
Cable Fixing	∅ 0 - 0 mm
Variant	

### Performance

Configuration	4K.95D : 4 FO Type F2, 5 LV
Insulator	L: PEEK (UL 94 / V-0/3.2, depends on material thickness)
Rated Current	

### Specifications

Contact Type:	Crimp
Fiber Optic Contact:	Type F2 (must be ordered separately)
V <sub>test</sub> (contact-shell):	1050 V (AC), 1490 V (DC)
V <sub>test</sub> (contact-contact):	1300 V (AC), 1840 V (DC)

### Others

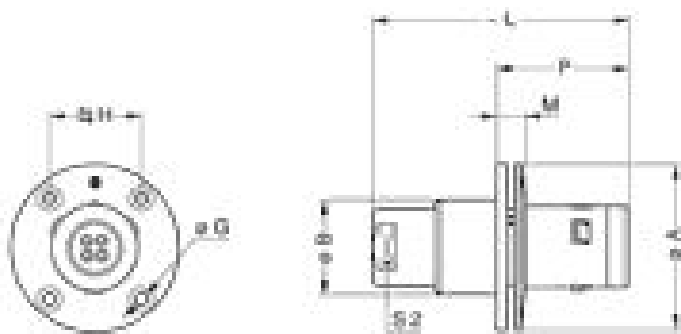
Endurance (Shell):	5000 mating cycles
--------------------	--------------------

Temp (min / max): -55° C / +200° C  
Humidity (max): <=95% [at 60 deg C /140 F]  
Vibration: 15 g [10 Hz - 2000 Hz]  
Shock Resistance: 100 g [ 6 ms]  
Salt Spray Corrosion: >1000 hr  
Climatical Category: 50/175/21  
Shielding (min): 95 dB (10 MHz)  
Shielding (min): 80 dB (1 GHz)  
IP Rating: 68

---

## DRAWINGS

### Draws



### Dimensions

	A	B	G	H	L	M	P	S2
mm.	47	28.5	3.4	27	71	11	32	19
in.	1,85	1,12	0,13	1,06	2,80	0,43	1,26	0,75

---

## RECOMMENDED BY LEMO

### Tools

Crimp settings: AWG/Selector = 18-20/8-7  
Positionner: DCE.91.134.BVC  
Extractor: DCC.91.131.5LA  
Extractor 2: DCF.91.133.5LT  
Replacement contact: FGG.4B.565.ZZC  
Spanner wrench: MTZ.4E.442.190

### Cables

