



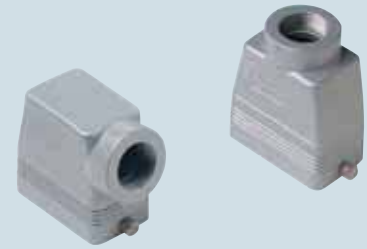
inserts:		page
CDD	42 poles + ⊕	55
CQE	18 poles + ⊕	75
CN	10 poles + ⊕	81
CCE	10 poles + ⊕	88
CNE, CSE	10 poles + ⊕	89
CSS	10 poles + ⊕	100
CMSE	3+2 (aux) poles + ⊕	114
CMCE	3+2 (aux) poles + ⊕	114
CX	8/24 poles + ⊕	129
MIXO	3 modules	137÷151

insert centre distance:
57 x 27 mm

hoods with 4 pegs



hoods with 2 pegs



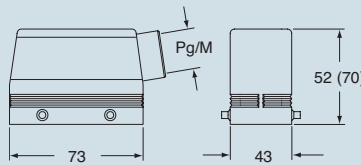
description	part No.		entry Pg		part No.		entry M	
with pegs, side entry	CHO 10		16		MHO 10.20		20	
with pegs, side entry					MHO 10.25		25	
with pegs, side entry, high construction	CAO 10.21		21		MAO 10.32		32	
with pegs, side entry, high construction	CAO 10.29		29		MAO 10.40		40	
with pegs, top entry	CHV 10		16		MHV 10.20 **		20	
with pegs, top entry					MHV 10.25		25	
with pegs, top entry, high construction	CAV 10.21		21		MAV 10.32		32	
with pegs, top entry, high construction	CAV 10.29		29		MAV 10.40		40	
with pegs, frontal entry, high construction	CAF 10		16		MAF 10.20		20	
with pegs, frontal entry, high constr., without adaptor *	CFF 10		16		MFF 10.20		20	

* enclosure without adaptor, threaded on the body, to be used only with a complete cable clamp.

** can only be used with a complete cable clamp (to be purchased separately)

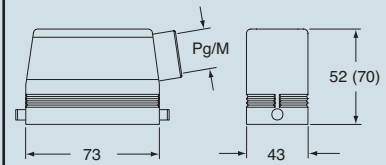
dimensions in mm

CHO (CAO) and MHO (MAO)

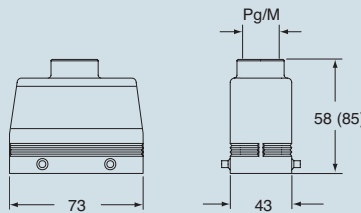


dimensions in mm

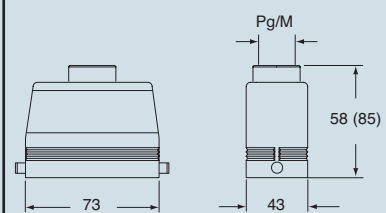
CHO L (CAO L) and MHO L (MAO L)



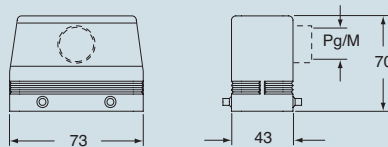
CHV (CAV) and MHV (MAV)



CHV L (CAV L) and MHV L (MAV L)



CAF/CFF and MAF/MFF



CALUS® Type 4/4X/12

dimensions indicated are not binding and may be changed without notice

size 57.27