



**Product Benefits**

- Compliant to SMPTE 311M and ARIB (BTA S-1005B) cables
- 2 single-mode optical contacts
- Easy termination
- 2 High voltage power contacts Ø1.3 mm
- 2 Low voltage signal contacts Ø0.9 mm
- Standard 1.25mm ceramic ferrule

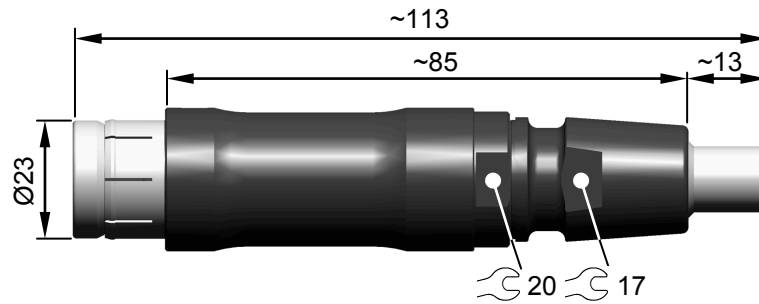
*Pages*

Dimensional Data .....	2-3
Material & Surface Treatments.....	4
Electrical Data and Optical Performance .....	4
Environmental & Mechanical Data .....	4
Tooling .....	5

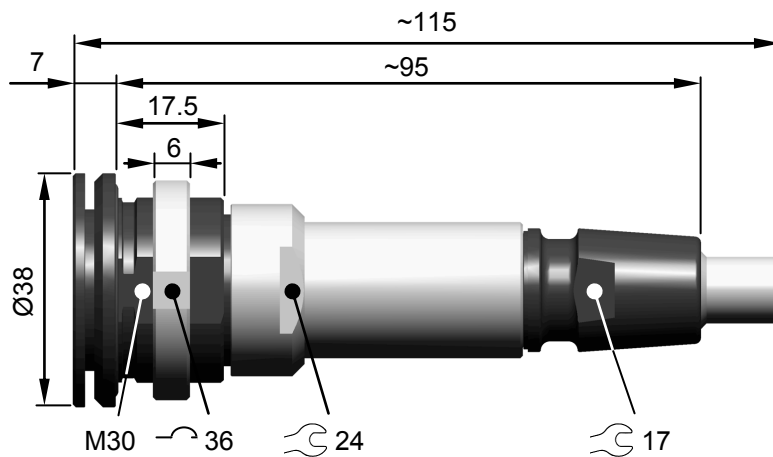
Information provided herein is believed to be accurate at time of publishing. Fischer Connectors reserves the right to make modifications on products for continuous improvement without prior notice.

**Dimensions**

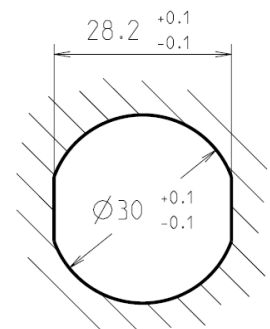
SE 1053 HDTV-xxx



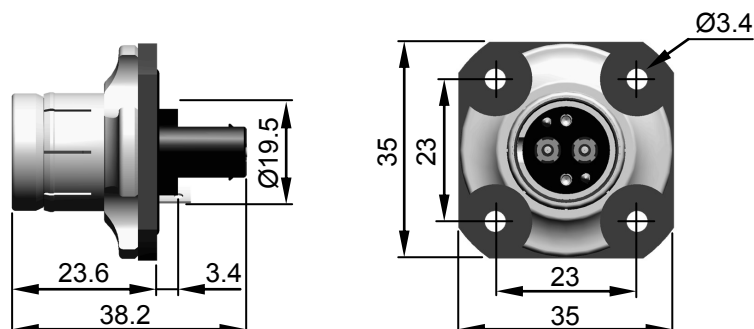
DSBE 1053 HDTV-xxx



Panel cut-out

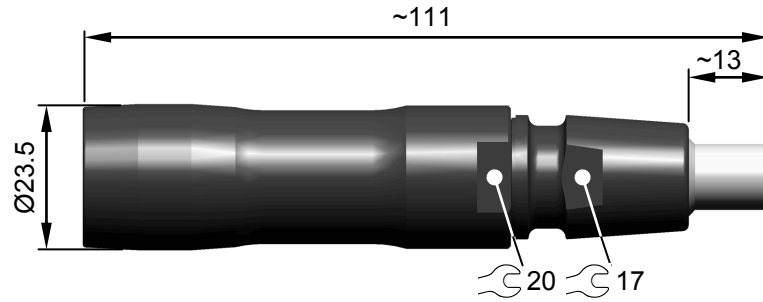


DSQ 1053 HDTV-xxx

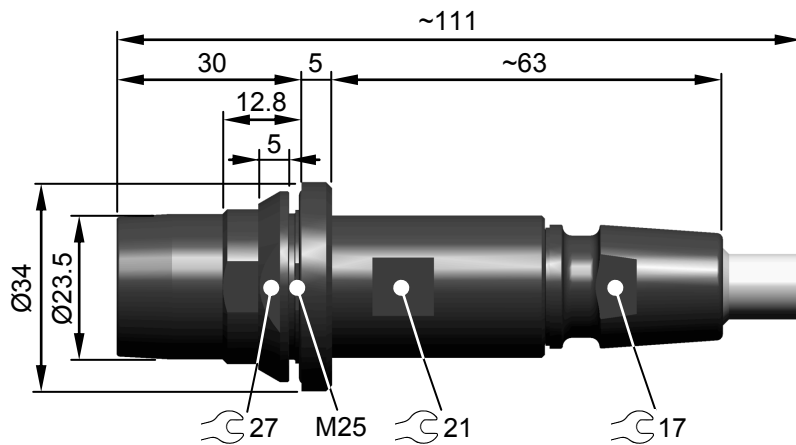


**Dimensions**

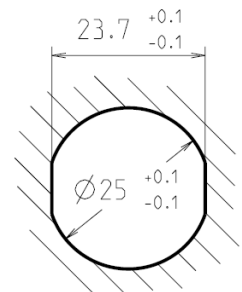
KE 1053 HDTV-xxx



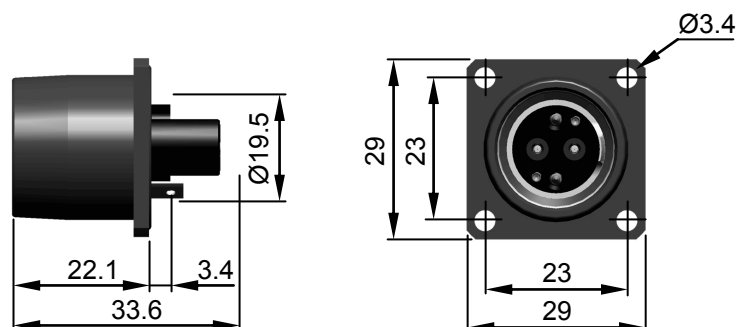
DKBE 1053 HDTV-xxx



Panel cut-out



DBQ 1053 HDTV-xxx



## Material & Surface Treatments

Metal Parts	Material			Finish	
	Designation	ISO	Standard	Designation	Standard
<b>Body Shell</b>	Brass Steel	CuZn39Pb3 44SMn28	CW614N/UNS C 38500 - / -	Anthracite Nickel	MIL-P18317
<b>Cable Clamps, Nuts and other Inner Parts</b>	Brass	CuZn39Pb3	CW614N UNS C 38500	Nickel	SAE-AMS-QQ-N-290 SAE-AMS2404
<b>Contacts</b> - Male (solder) - Female, - Male (crimp)	Brass	CuZn39Pb3	CW614N UNS C 38500	1 µm Au over Nickel	SAE-AMS2422, ASTM B488
	Bronze	CuSn4Zn4Pb4	CW456K ASTM B 139, UNS C 54400		
<b>Insulator and Sealing</b>	<b>Material</b>		<b>Flammability</b>		
<b>Insulator</b>	GF Reinforced Thermoplastic		UL 94 HB		
<b>O-rings</b>	Nitrile Rubber NBR		UL 94 HB		
<b>Protective Accessories</b>	<b>Material</b>		<b>Flammability</b>		
<b>Protective Sleeve and Bend Relief</b>	Thermoplastic Elastomer		UL 94 HB		
<b>Protective Caps</b>	POM		UL 94 HB		

Our products are RoHS compliant and conform with the EC Directive 2002/95/EC

## Electrical & Optical Performance


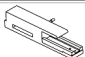
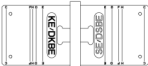

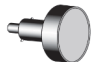



Electrical Characteristic		Typical Values	Standard
<b>Test Voltage</b>	Power Contact - Ground	1.8 kV a.c.	IEC 60512-4-1 Test 4a
<b>Insulation Resistance</b>	Power Contact - Ground	> 10 <sup>12</sup> Ω	IEC 60512-3-a Test 3a
<b>Contact Resistance 5'000 Mating Cycles</b>	∅0.9 mm	6 mΩ	IEC 60512-2-2 Test 2b
	∅1.3 mm	3.5 mΩ	
<b>Maximum Current</b>	Power Contacts	9 A	IEC 60512-5-1, Test 5a
<b>Ground Contact Resistance over Shell and Cable Shield 5'000 Mating Cycles</b>		5 mΩ	IEC 60512-2-6 Test 2f
<b>Shielding Effectiveness</b>		> 60 dB up to 1GHz	IEC 60512-23-3
Optical Characteristic		Typical Values	Standard
<b>Insertion Loss</b>		0.8 dB. <b>(1)</b>	IEC 60874-1, Method 10
<b>Return Loss</b>		50 dB	IEC 60874-1, Method 10
<b>Insertion Loss Variation</b>	Attenuation by Shock or Swivel	<0.2 dB	IEC 60874-1, Method 10

## Environmental & Mechanical Data

Characteristic		Typical Values	Standard
<b>Sealing Performance</b>	Mated Connectors	IP68 2m submersion for 24 hours	IEC 60529
<b>Operating Temperature Range</b>	< 0.2 dB Optical Loss Variation	-20°C to +60°C	IEC 60874-1 IEC 60512-6
<b>Endurance</b>	Mechanical, Electrical, Optical	5'000 mating cycles	IEC 60512-5-9a MIL-STD-202 Method 204
<b>Cable Retention</b>		1000 N <b>(2)</b>	Tensile Test

(1) Cable preparation, particularly cleaving, will affect result. Values <0.5dB can be achieved with optimized termination process.

(2) Depends on cable type and construction.

Tooling				
	Designation		Part Number	
	<b>Complete Tool Kit</b> Contains all required general purpose and specific tools as well as consumables		TQ30.001	
1053 Specific Spare Tools (1)	Designation	Type	Part Number	
	<b>Unicam Installation Tool</b>		TQ30.002	
	<b>Unicam Adapter</b>		TQ30.003	
	<b>Fiber Cleaver</b>		TX00.399	
	<b>Cable Cutting Jig</b>		TQ30.006	
	<b>Fiber Optics Cleaning Stick</b>		TX00.323	
	<b>Crimp Tool</b> (2)		TX00.240	
	<b>Crimp Positioner</b> (2)	Male	Ø0.9	TX00.308
		Female	Ø0.9	TX00.310
		Male	Ø1.3	TX00.338
		Female	Ø1.3	TX00.312
	<b>Contact Insertion Tool</b>		Ø0.9	TX00.341
			Ø1.3	TX00.342
	<b>Contact Extraction Tool</b>		Ø0.9	TX00.205
			Ø1.3	TX00.212
	<b>Special Hook Wrench for DSBE Nut</b>		TX00.106	

(1) General purpose tools common for fiber optics and/or connector termination are not listed.

(2) For detailed crimping instructions, log on to our online technical library at [www.fischerconnectors.com/technical](http://www.fischerconnectors.com/technical).